



Holiday Hampers Numeracy and a grade 7 Challenge



Community + (Support + Acceptance) = Sense of Belonging

- The Numeracy Committee and Grade 7s are challenging JWG students to be a part of our community and make a difference for someone facing adversity.
 - This challenge also involves the use of numeracy skills!
- This is a great opportunity for JWG to see numeracy in real-life, but most importantly to ***MAKE A POSITIVE IMPACT WITHIN IN OUR COMMUNITY!***



WHAT TO EXPECT

Hamper Collection dates: Dec 2 - Dec 13



Donation
Box



Planning for
Aura points



Collect
Aura points

If you would like, create a donation box with your class. They can use this box to bring donations down during PAWS.

Take a look at the donation list as a class. Make a plan for students to bring in items.

Have a student tally the classroom points and bring down the total with the items during PAWS during our collection dates.

ALL RIGHT CHAT...

The latest title on their preferred platform is every gamer's dream gift.



Brain Rot Scale	Aura
Cooked	0 - 20
Selling	21 - 40
Fumbling the bag	41 - 60
Mid	61 - 80
Eating	81 - 110
Ate that	111 - 140
Ate, left no crumbs SIGMA	141 +

JWG Holiday Hampers Points Counter

Week 1 Dec. 2 - 6

Week 2 Dec. 9 - 13

Item	Aura Points
Cereal Box (Md/Lrg)	5
Box of Cookies	5
Granola Bar Pack	4
Box of Crackers	4
Uncooked Rice	4
Pancake/Any Cake Mix	3
Coffee/Tea	3
Oatmeal	3
Syrup, Sugar, Honey	2
Mac and Cheese Box (individual)	2
Baby food	2
Powdered/Canned Milk	2
Bar of Soap/Toothpaste	2



Item	Aura Points
Can/Jar of Pasta Sauce	5
Canned Meat	5
Peanut Butter/Jam/Spreads	5
Flour	4
Canned Soup/Pasta	4
Uncooked Rice	4
Boxed Potato Mix	3
Cooking Oil	3
Canned Fruit/Vegetable	3
Salt, Pepper, Spices	2
Instant Noodles	2
Powdered/Canned Milk	2
Bar of Soap/Toothpaste	2



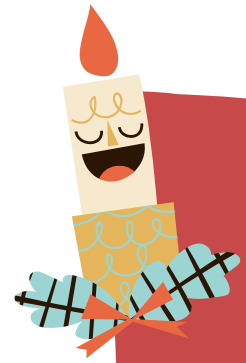
* Homeroom Donation Boxes

Donations will be collected everyday in the front foyer during
* PAWS. We invite each homeroom to create their own donation
box to help carry down items.

Have fun with the design. Is it a box, a bag, a sled? How
will you get your items from the classroom to the front foyer?



DO'S AND DON'TS OF HAMPER DONATIONS



Do give Nonperishable items

Any items that are dried or canned are great. (Items that do not require refrigeration).



Do consider the weekly options

We are looking to create a full box with lots of variety, that is why there is a list for guidance (and aura points)



Do strategize and raise your Aura

Work together, make a plan and be Sigma. Make sure you tally your points before bringing items to the foyer.



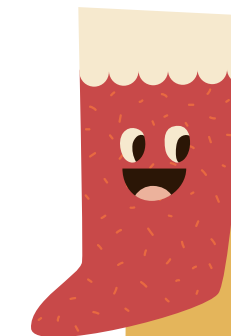
Don't bring open items

This collection is not the place to share items you have started



Don't limit yourself

Item's that are not on the list but would be helpful or add variety are welcome.



Don't feel obligated

If you cannot donate this time around, that is okay!



Enjoy the gift of
giving!

Numeracy and the Grade 7 students thank you!